

Press Release

1 May 2026

Cleantech Building Materials plc

Innovative Accoya® Wood Projects in China

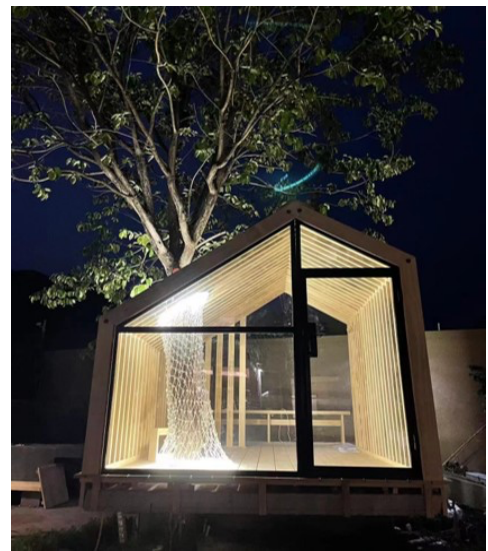
Cleantech Building Materials plc (“CBM” or the “Company”) is proud to highlight two recent projects in China undertaken by Accoya® Wood authorised distributor, Jiangsu WoodCarp Timber Technologies Co. Ltd (“WoodCarp”), demonstrating the versatility of Accoya® Wood to create sustainable, visually stunning, high-performance innovative concepts.

Courtyard Treehouse, Qingdao, China

Set in a private courtyard nestled between the mountains and sea at Qingdao, a leisure treehouse has been built around a native giant tree - a high-performance application of Accoya® Wood.

This creative structure, rooted in nature and framed by wood, not only creates an immersive natural leisure space for the owner, but also perfectly utilises the core advantages of Accoya® Wood in outdoor customised construction.

Guided by the design philosophy of ‘letting architecture coexist with trees’, the project provides a transparent and lightweight leisure treehouse, allowing the tree trunk to naturally pass through the interior, creating a unique experience of ‘the house within the trees, and trees accompanying the dwelling’. The coastal Qingdao climate, characterised by high humidity, salt fog erosion, and significant temperature differences, imposes extreme requirements on wood’s weather resistance and stability. It is precisely the advantages of Accoya® Wood that turn this creative design from a blueprint into reality.



WoodCarp, provided a full range of Accoya® Wood for this project, the core strengths of which run through the entire cycle of design, processing and construction:

- **Ultimate weather resistance:** Empowered by patented acetylation technology, Accoya® Wood at the molecular level thoroughly solves the issues with natural wood such as easy decay, insect infestation and cracking. It exhibits excellent resistance to salt fog and UV rays, ensuring a service life of over 50 years in outdoor Qingdao environments - far superior to regular treated wood. This eliminates the need for frequent maintenance and replacement.
- **Superior stability:** The dimensional stability of Accoya® Wood is increased by 3-5 times over conventional hard wood. It remains free from deformation even under drastic temperature and humidity changes, perfectly adapting to the large-scale glass curtain walls and wooden grille structures of the treehouse. It maintains a seamless, transparent effect long-term, preserving the building's precision and aesthetics.
- **Eco-friendly safety:** Crafted from sustainable wood with no harmful chemical additives during modification, Accoya® Wood creates a healthy and safe space, while retaining the warm texture of solid wood to blend harmoniously with the natural environment.
- **Architectural aesthetics:** Preserving the natural grain and warm texture of solid wood, it complements the native courtyard trees and mountain-sea scenery, creating a transparent, vibrant atmosphere by day and a serene, soothing ambiance by night—delivering an immersive natural aesthetic.

From the raw log frame during construction to the completed transparent structure, Accoya® Wood enables this treehouse to stand as an example of symbiosis between nature and human habitation amid Qingdao's mountains and sea. More than just a leisure space, it demonstrates that Accoya® Wood is the top choice for high-end outdoor woodworking and landscape architecture.



Tea House Project, Jiaxing, China

This project blends natural texture with oriental elegance to create a tranquil tea house built with Accoya® Wood.

Located in Jiaxing, the project weaves the gentle charm of the Jiangnan water town into every design detail. Accoya® Wood, supplied by WoodCarp, comprises the main structure, infusing the space with sustainable wood aesthetics and creating a healing retreat in the city.

Inside the space, Accoya® Wood is used for key furniture pieces such as tea tables and chairs. Its natural, fine grain delivers a warm, delicate texture that harmonises perfectly with soft fabrics and lush greenery. As a premium modified wood, Accoya® Wood boasts outstanding decay resistance and dimensional stability. Even in the humid environment surrounded by indoor plants, it retains its pristine texture for years, laying a durable, eco-friendly foundation for the tea house.



With an in-depth expertise in Accoya® Wood's properties, Woodcarp precisely controlled every detail of the woodwork. From material selection and processing to on-site installation, they fully aligned with the project's design vision, seamlessly integrating the Accoya® Wood's exceptional quality and natural beauty with the space's overall style.

Commenting, Chen Yong, Director of WoodCarp, said: *“Accoya® Wood represents a revolutionary change in sustainable timber, offering exceptional durability, stability and resistance to the elements. We enjoy working with it because it combines high performance with environmental responsibility, making it ideal for modern, long-lasting designs.”*

Commenting, Jason Wang, COO of Diamond Wood China, said: *“Accoya® Wood sets a new benchmark for sustainably engineered timber – where science enhances nature to achieve outstanding durability, stability and beauty. It is innovation you can see and performance you can trust.”*

The Accoya® Wood Advantage

Accoya® Wood is a revolutionary solid wood product created through a patented acetylation process that transforms fast-growing FSC® - certified Radiata Pine into a material with strength and durability to rival—and often exceed—traditional tropical hardwoods and carbon-intensive materials like steel, aluminium, and PVC.

Used in applications ranging from windows and doors to cladding, decking, and high-end architectural design, Accoya® Wood offers:

- **Dimensional stability and durability** backed by a 50-year warranty;
- **Low maintenance and long coating life**, reducing total lifecycle cost; and
- **Superior performance in tropical climates**, including high resistance to termites and splintering, and a cooler surface underfoot.

Accoya® Wood is the only structural building material in the world to have received Cradle to Cradle Certified® Gold certification. Its carbon-sequestering properties are profound: for every cubic metre produced, 944kg of CO₂ is captured, while only 88kg is emitted.

Through its wholly owned subsidiary, Diamond Wood China Limited, CBM is currently constructing the first Accoya® Wood factory in China, with Phase 1 capacity progressively reaching 160,000m³—laying the foundation for a major shift towards carbon-negative construction in the world’s largest building materials market. At full Phase 2 capacity, CBM’s China factory will produce 320,000m³ of Accoya® Wood annually, sequestering carbon equivalent to the emissions from over 11 million litres of gasoline every year. Phase 3 is planned to increase capacity further to 480,000m³ of Accoya® Wood annually.

Diamond Wood, CBM’s operating business in Asia, has maintained **FSC® certification** since 2008—ensuring full traceability and responsible sourcing from sustainably managed forests. The new China manufacturing facility, now under construction, will incorporate advanced environmental standards and closed-loop systems that repurpose key production outputs—paving the way for a fully circular and low-impact industrial model.

With more than 6,000 projects across Asia already incorporating Accoya® Wood, the refreshed brand signals the Company’s intent to lead a global transition toward sustainable, performance-driven construction materials

Further Enquiries:

Cleantech Building Materials plc
Adrian Wyn-Griffiths

info@cbm-plc.com
+44 20 3934 6632

IFC Advisory Limited
(Financial PR)
Tim Metcalfe / Zach Cohen

+44 20 3934 6632

Notes to Editors:



CBM, through its subsidiary Diamond Wood China Limited, owns exclusive manufacturing rights to Accoya® Wood in China and is in the process of building a new large scale Accoya® Wood factory in China to meet the huge demand in the region.

For more information please see: <http://www.cbm-plc.com> and <https://www.diamondwoodchina.com>

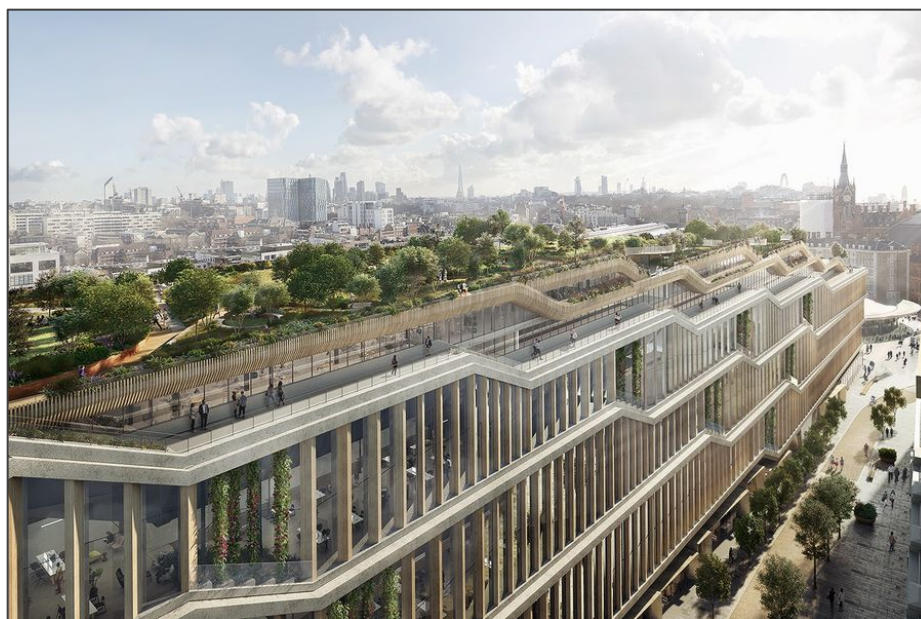


accoya 

Accoya® Wood is produced using a proprietary patented acetylation technology that effectively converts sustainably grown softwoods and non-durable hardwoods into what is best described as a ‘high technology wood’. Distinguished by its durability, dimensional stability and, perhaps most importantly of all, its reliability (in terms of consistency of both supply and quality), Accoya® Wood is particularly suited to exterior applications where performance and appearance are valued. Moreover, the Accoya® Wood production process does not compromise the wood's strength or machinability. The combination of dimensional stability, durability and retained strength means that Accoya® Wood offers a wealth of new opportunities to architects, designers and specifiers. These benefits result in lower maintenance and total cost of ownership while using a higher sustainable and environmental responsible building material.



As an example of Accoya® Wood’s use, Google’s London headquarters, is the largest wooden façade in the world (23,300 m² total area). Accoya® wood was selected for its negative carbon footprint, resistance to exterior elements, and its beautiful natural aesthetic.



For more information please see: <https://www.accoya.com>